

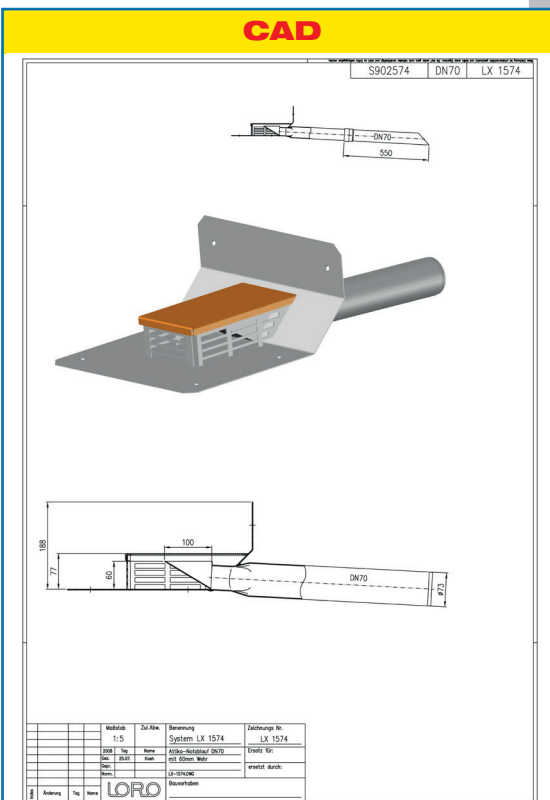
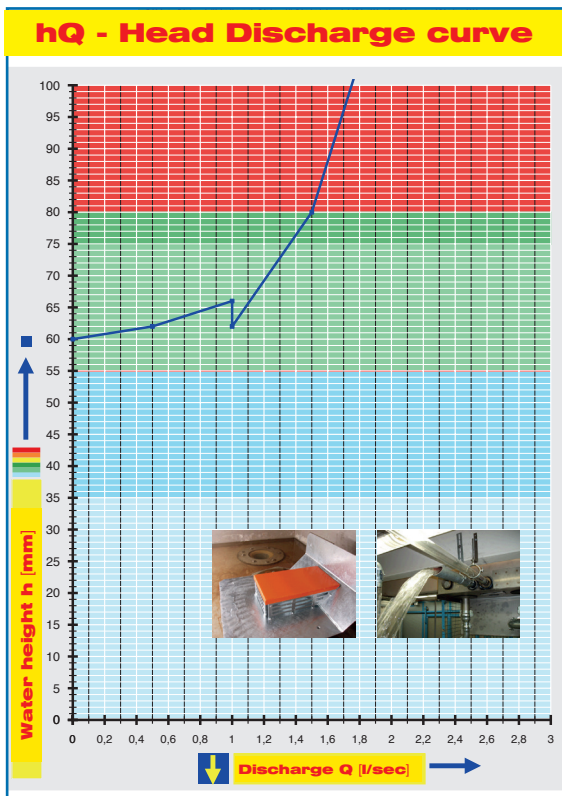
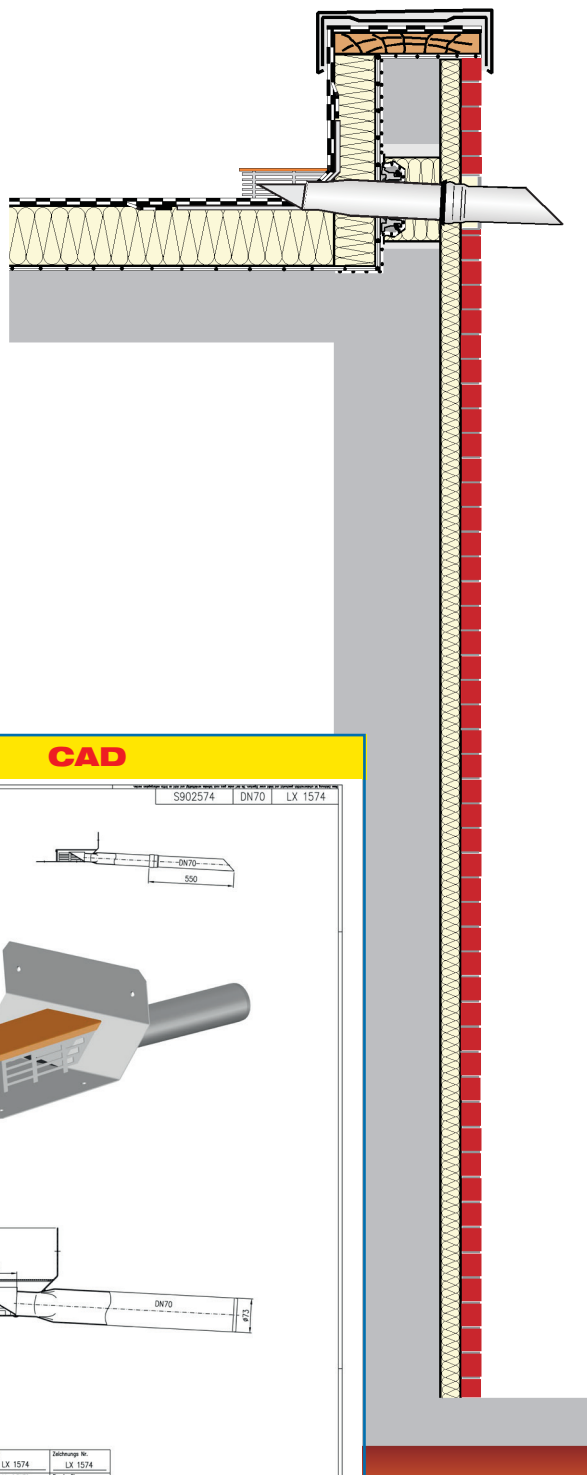
## Specification sheet LX 1574

### Parapet drainage system Series 43 Parapet direct for small roof areas, weir height 60 mm

Emergency drainage	
Gravity flow	
Silent	
<b>Discharge rate:</b>	<b>1,4 l/sec</b>
<b>Water height:</b>	<b>75 mm</b>
<b>Roof penetration:</b>	<b>0 mm</b>
<b>Diameter:</b>	<b>DN 70</b>
<b>LX-Number:</b>	<b>LX 1574</b>
<b>Weir height:</b>	<b>60 mm</b>
<b>Drain:</b>	<b>ventilated</b>
<b>Downpipe:</b>	<b>ventilated</b>
<b>Downpipe height:</b>	<b>-</b>
<b>Drainage:</b>	<b>on floor</b>
<b>Flangeform:</b>	<b>Bondging flange 45°</b>

#### LX 1574 Piece list

- 1 x Art.-No. 01326.070X, Parapet drain
- 1 x Art.-No. 15199.070X, LORO-X Spout
- 1 x Art.-No. 13235.070X, LORO-X Sliding flange
- 1 x Art.-No. 00911.070X, LORO-X Sealing element
- 1 x Art.-No. 00986.000X, LORO-X Lubricant



**Systemshape**

**Systemform**

Water height	mm	20	25	30	35	40	45	50	55	60	65	70	75	80	85	90	95	100
Discharge	l/sec	-	-	-	-	-	-	-	-	-	0,9	1,2	1,4	1,5	1,6	1,6	1,7	1,8
<b>Silent</b>																		

**LORO-X Parapet direct emergency drainage, for small roof areas, weir height 60 mm**

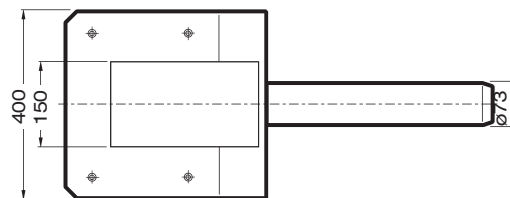
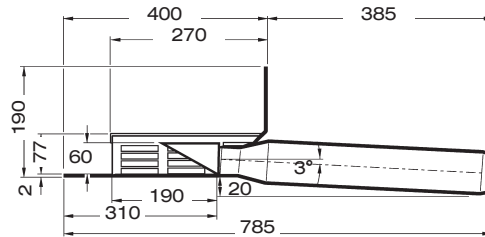
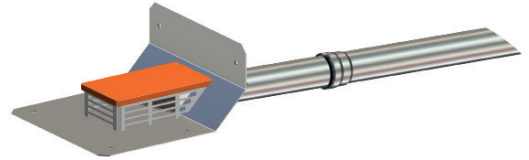
**DN 70**

**LX1574-3X**

**Series 43**

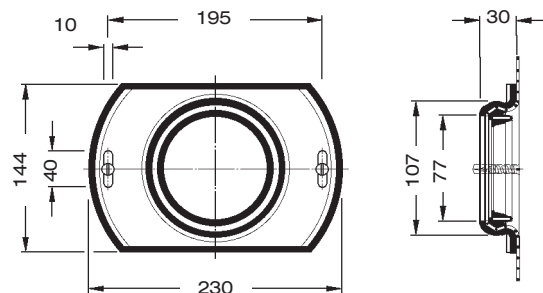
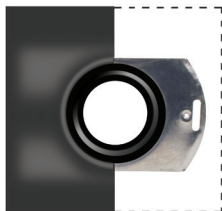
Drain Art.-No. 01326.070X  
Weight: 5,4 kg

**with bonding flange**  
for bituminous roofing sheets  
**Weir height 60 mm**



**LORO-X Sliding flange**

with pre-installed connection sleeve for vapor barrier made of bituminous or plastic-roofing sheets (please indicate manufacturer and material of the sealing sheet to be attached), made of galvanized steel, including fastening screws  
Art.-No 13235.070X  
Weight: 1,4 kg



**Heat tracing:** Lorowerk recommends to check all drains and pipes with regard to their frost-sensibility. Where necessary, these parts should be upgraded with heat tracing.